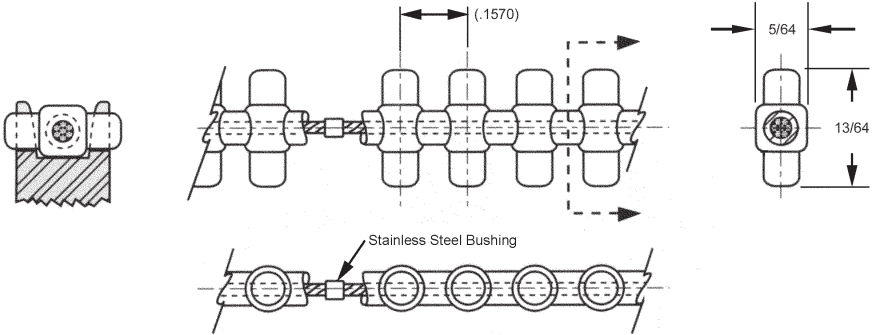


# BELTS

PITCH	CIRCULAR PITCH	MATERIALS	BERG'S ® NAME	SPROCKET
<b>1/20</b>	<b>.1570</b>	Polyurethane (Yellow) 1/32" Dia. Stainless Steel Cable*	<b>Min-E-Pitch®</b>	Operates with 3MDP and 3MDF series.



STOCK NO.	NO. OF PITCHES	LENGTH (Ref.)
3CBF-30-E	30	4.712
3CBF-35-E	35	5.498
3CBF-40-E	40	6.283
3CBF-45-E	45	7.069
3CBF-50-E	50	7.854
3CBF-55-E	55	8.639
3CBF-60-E	60	9.425
3CBF-70-E	70	10.996
3CBF-80-E	80	12.566
3CBF-90-E	90	14.137
3CBF-100-E	100	15.708
3CBF-110-E	110	17.279
3CBF-120-E	120	18.850
3CBF-130-E	130	20.420
3CBF-140-E	140	21.991
3CBF-150-E	150	23.562
3CBF-160-E	160	25.133
3CBF-170-E	170	26.704
3CBF-180-E	180	28.274
3CBF-190-E	190	29.845
3CBF-200-E	200	31.416
3CBF-210-E	210	32.987
3CBF-220-E	220	34.558
3CBF-230-E	230	36.128
3CBF-240-E	240	37.699
3CBF-250-E	250	39.270
3CBF-260-E	260	40.840
3CBF-270-E	270	42.412
3CBF-280-E	280	43.982
3CBF-290-E	290	45.553
3CBF-300-E	300	47.124
3CBF-310-E	310	48.695
3CBF-320-E	320	50.265
3CBF-330-E	330	51.836
3CBF-340-E	340	53.407
3CBF-350-E	350	54.978
3CBF-370-E	370	58.119
3CBF-400-E	400	62.832
3CBF-440-E	440	69.115

\* This series is not available with alternate core configuration.

\*\* Reduce Operating Load Rating by 50% for field splices.

- For Field Splice Kit order 3CCR-7.
- Zero Backlash
- Odd Angles
- Silent Drive
- Infinite Lengths
- 90A Durometer
- No Lubrication
- Weight .12 oz./ft.
- Positive Drive
- Ultimate Tensile Strength 50 lbs. - 9 lbs./Pin when belt is used in open loop configuration (without splice, no crimp bushing)
- Temperature Range +180°F to -15°F
- Recommended Operating Load 12 lbs.
- Recommended Max. Operating Speed 376 Feet/Min.

BULK FOOTAGE - NOT SPLICED	
STOCK NO.	LENGTH
3CBF-5FT	5 FT
3CBF-10FT	10 FT
3CBF-25FT	25 FT
3CBF-50FT	50 FT
3CBF-100FT	100 FT

